



INSTALLATION GUIDE

EcoProtect

Environmentally friendly weather resistant flooring

Longhouse Coating EcoProtect is a load bearing tongue and groove flooring panel designed to withstand the effects of weather and foot traffic during the construction process, while reducing the slip risk.

EcoProtect should be fixed in accordance with the list of manufacturers' recommended installation products (see recommended product guide).

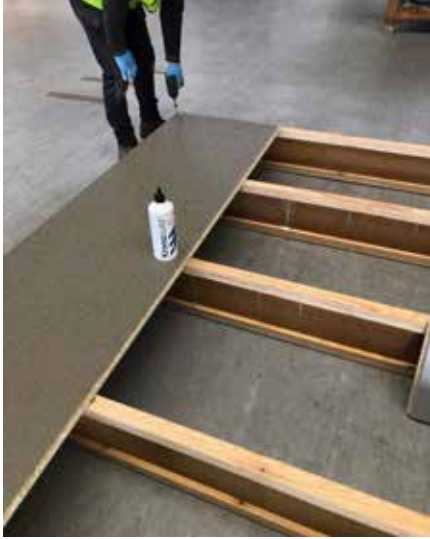
It is essential that the T&G joints are not left out in unsuitable weather before the installation process begins. It is always recommended that EcoProtect remains in its protective packaging and/or is stored in a dry area protected from frost and rain until immediately before the installation process begins.

To guarantee the longevity and durability of EcoProtect it is recommended that the cut and exposed edges of panels are protected and sealed with high-performance weather resistant tape (when applicable) in conjunction with the recommended fixings and D4 rated (EN 204) adhesive required to create a weather resistant working platform.

For EcoProtect to perform at its best the installation guidelines below should be closely observed.



1. Apply one uninterrupted bead (shown in red) of D4 rated (EN 204) adhesive to the top of the perimeter joists and noggins corresponding to the area of the 1st panel to be installed.



2. Install the first panel at the perimeter and ensure that the board is secured into position with fixings at a minimum of 600 centres, the heads of the fixings should sit flush or just below the panel surface.



3. Once the perimeter panels are fixed into position with the appropriate mechanical fixings apply the D4 rated (EN 204) adhesive in a continuous bead along the tongue and groove of the joints about to be installed, making sure that the entire joint that is to be fixed is covered.

Once the boards are pushed together a small amount of adhesive should be squeezed out between the tongue and groove joint which will begin to foam and form a weather resistant seal between the boards.



4. Continue installing the panels as required in a staggered pattern by repeating the fixing, gluing, and taping steps for each panel.



5. Any gaps in the joints and all fixing heads should be sealed with a bead of D4 rated (EN 204) adhesive or by applying a small area of tape over the head of the fixing.



6. The surface of the panel should be clean and dry before applying the tape. Press the tape firmly onto the panel (a rubber roller or rubber knife can be used to avoid damaging the tape) ensuring a strong and water-resistant connection.

7. Exposed cut edges of the panels should be sealed and protected with the recommended specialist water resistant tape. This will prevent moisture getting into the panel edge and mitigate any associated swelling.



8. Only after the completion of all construction work should the excess adhesive be removed with a hand scraper. Use a soft brush to clean the floor.